



Orange Enterprises, Inc
2377 W. Shaw Suite 205
Fresno, CA 93711
Tel (559) 229-2195
Fax (559) 229-9348
www.OrangeSoftware.com

P.E.T Tiger™ Payroll Employee Tracking

The revolutionary mobile time clock for Agribusiness

Whether your business is family owned or a major corporate enterprise, you need **P.E.T Tiger™** to handle your payroll data collection and production tracking. It fits businesses of any size, from a few employees to thousands.

Fast and Easy Recordkeeping

P.E.T Tiger™ accurately and easily collects hours and piece rate payroll information using scannable tags like Barcodes or RFID. The crew leader enters the date, starting time, crop/field, and job (task/activity.) The crew leader then scans the barcode associated with each employee (this can be a list, badge or tag.) Each time the employee brings a bucket, lug, bushel, or bin, his barcode/tag is scanned, recording the (piece-out) unit, time, and count. This feature is also available to handle crews that split the pieces picked proportionately. Defaults are maintained to minimize the number of scans necessary. For hourly employees a quick scan of their badge or tag clocks them out.

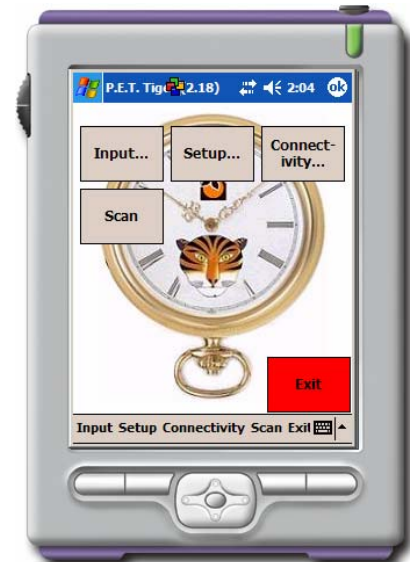
P.E.T Tiger™ utilizes today's technology to store and collect data:

Incorporates:

- ◆ Barcodes & RFID
- ◆ ID Cards or Buttons
- ◆ GPS/GSM/GPRS
- ◆ Biometrics
- ◆ Handheld Pocket PC's

Payroll Data For:

- ◆ Quality Assurance
- ◆ Food Traceability
- ◆ Better Management
- ◆ Customer Invoicing
- ◆ Yield Tracking



The Windows Pocket PC or Windows Mobile on handheld computers (like Symbol, HP, or Opticon) as well as other devices with scanners are utilized. **P.E.T Tiger™** also allows direct inputting of data to a PC (laptops, tablets, or desktops) **P.E.T Tiger™** generates and prints its own employee badges with barcodes or incorporates badges already in use. The system also allows for new employees to be recorded in the field at the time of hiring.

Compliance with Wage Laws in Less Time

P.E.T Tiger™ handles minimum hourly pay requirements, irrigator exclusions and mandatory breaks. Electronic processing and data storage replaces paper to improve efficiency and accuracy. View your data as it comes in, and, if necessary, edit it right then. Easy to use sorting and filters make it simple to group the information in a way that makes sense. As a result it minimizes the tedious and error prone calculations of converting time sheets to accounting input data and eliminates the paperwork of recording attendance and production. It significantly shortens the time between the work done and the payroll checks. **P.E.T Tiger™** also tracks equipment usage.

Production Tracking

P.E.T Tiger™ increases crop harvest efficiency by providing instant information that growers can use to expedite work flow. Data collected in the field is transmitted to an office computer for analysis. With immediate information on how much each field is producing growers can determine whether to add or move workers and what product is available for sale at any given time. Reports are available to assess each employee's productivity allowing management to utilize them more efficiently. It eliminates pre-printed cards and the need to employ an end-of-day card counter. This reduces office staff and minimizes errors in the field. Time and expense to produce a clear, easy-to-read daily report is reduced to seconds.

- ◆ **Paperless Data Collection**
- ◆ **Accuracy of Data**
- ◆ **Product Tracking**
- ◆ **Detailed Cost Accounting**
- ◆ **Access to Real-Time Data**
- ◆ **Increased Efficiency**

Simplified Payroll, Cost Accounting and Labor Contractor Billing

The **P.E.T Tiger™** data is uploaded onto your Server or PC. Upload can be done either locally or from remote locations via our Tiger Relay Program, modem, internet, IP connection or cellular via smart phones or wireless devices. Data can then be reviewed and edited. Verification of pieces can be done on an employee or crew basis. No more manual data entry into accounting packages; the payroll process is reduced to minutes. The resulting data is exported to any Payroll and Cost Accounting software packages (Famous, QuickBooks or any other accounting program) and creates many related informative reports. For labor contractors customer invoices can be created from within the system.

The screenshot displays the 'Job Card' interface in the P.E.T Tiger software. The window title is 'Job Card Author: aa Update time: 8/1/07 2:18:31 PM'. The interface includes a menu bar with options like 'Cancel', 'Save', 'New', 'Delete', 'Find', 'Report', 'Filter', 'Export', 'Multi Edit', 'Help', and 'Close'. The main form contains several sections:

- Reference:** 0000075-07-JC-000-LG
- Time in Reference:** 0000049-07-CI-000-LG
- Time out Reference:** 0000050-07-CO-000-LG
- Date In:** 7/6/07
- Date Out:** 7/6/07
- Time In:** 6:45 AM
- Time Out:** 6:00 PM
- Gross Time:** 11.25
- Week Start:** 7/2/07 6:00:00 AM
- Exported:** No
- Weekly Hours:** 26.5
- Daily Hours:** 0
- Ranch:** Circle B
- Field:** Plums
- Weekly Exception:** Yes
- Weekly Days:** 3
- Employee:** Tom Anderson
- Job:** Picking-Stone
- Day Start:** 7/6/07 6:45:00 AM
- Rate Source:** Employee
- Amount:** 95
- Piece Underpayment:** [empty]
- Hourly Rate:** 7.75
- Piece Rate:** 4
- Crew:** Fields

Totals: 0.5, 10.75, 86.2187, 23.7500, 95

Equipment Used:

Line	Equipment
1	15ft Trailer
2	[empty]

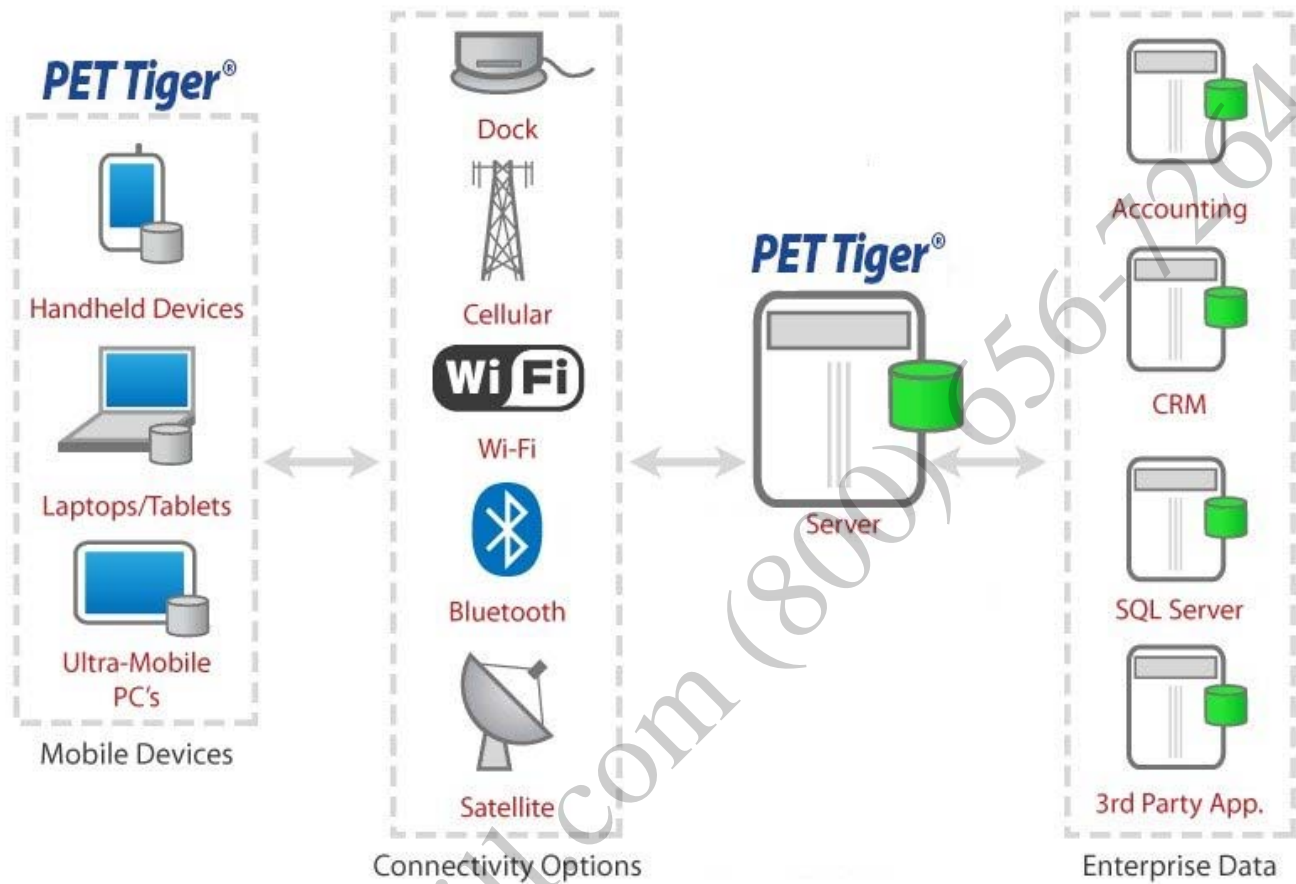
Time Table:

Line	Type	Gross Time	Break Time	Net Time	Hourly Rate	Time Amount	Pieces	Piece Rate	Piece Amount
1	Regular	10.5	0.5	10	7.75	77.5	22.093...	4	88.372...
2	Overtime	0.75	0	0.75	11.625	8.71875	1.6569...	4	6.6279...
*									

Simplicity and flexibility are the key forces behind **P.E.T Tiger™**. Field personnel learn the scanning procedures quickly and easily so they are much more receptive and willing to incorporate the system into their daily routines. Most importantly, **P.E.T Tiger™** is adaptable and can be used by Growers, Farm/Grove Management, Shippers/Packers, Vegetables, Nursery Vineyards, Row Crops, Orchards, Labor Contractors and any other Agribusiness.

Let Orange Enterprises Help YOU

Orange Enterprises, Inc., operating from Fresno, California since 1984, provides software solutions for thousands of Agribusiness. Since **P.E.T Tiger™** is not your ordinary off-the-shelf software it can be tailored to fit your specific type of business. The flexibility of **P.E.T Tiger™** allows Orange Enterprises, Inc to quickly customize the Program, reports etc to meet our customers' needs.



P.E.T Tiger™, Tiger Jill and Pocket Jill are trademarks of: Orange Enterprises, Inc.
www.TigerJill.com Tel: 800-656-7264 Fresno California